

iQ³ Vet™

The clear answer in
point-of-care ultrasound.



**Clearer images. Easier
diagnostic decisions.
New tools. All made
for you.**

Highest quality, rapid imaging.

Butterfly iQ3 Vet offers unparalleled imaging quality with lightning-fast data processing.

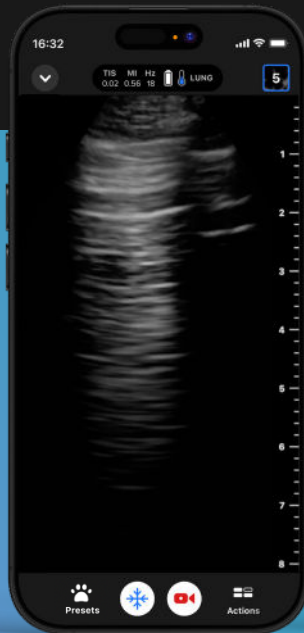
With a clarity so extraordinary, it enables you to swiftly and confidently diagnose conditions, transforming patient care. Simply connect the probe to your compatible iOS or Android device, select your preset in seconds with the swipe of a finger — and start scanning.

With over 17+ presets, here are just a few that make Butterfly best-in-class:



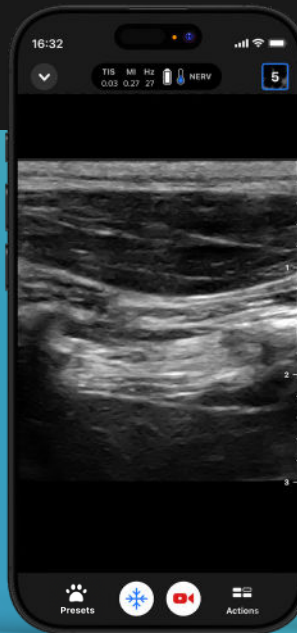
Cardiac

Perform fast TTE, evaluate suspected valve disease, and see the heart in two planes simultaneously.



Lung

Evaluate respiratory distress and reliably detect the presence of B-lines with our Auto B-line Counter tool.



Nerve

Perform nerve blocks under ultrasound guidance for better success rate and faster speed.



Equine MSK

Diagnose injuries and support lameness evaluations, in the clinic or in the barn.

Imaging tools: redefined.

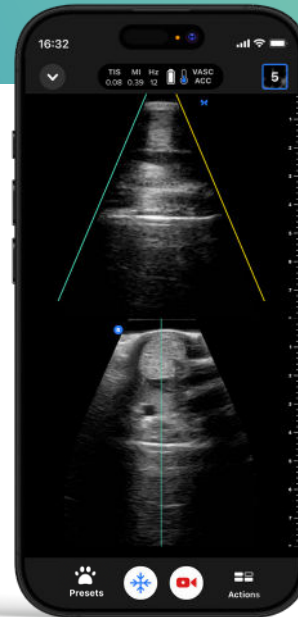
Modern diagnostics with advanced imaging tools.

During your most challenging cases or moments when you need assistance, Butterfly iQ3 Vet's breaking-edge technology can aid you in your scan.



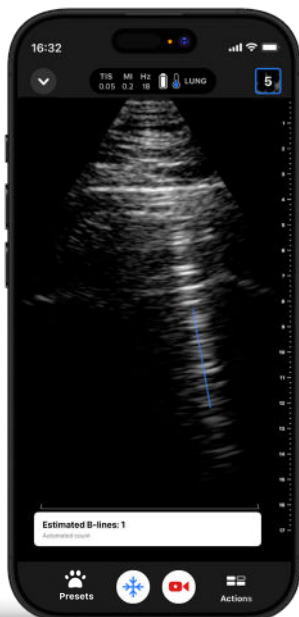
NeedleViz™

Visually highlight needles in-plane for added precision during challenging injections and line-placements.



Biplane™

The world's first POCUS Biplane Imaging makes it possible to see the short and long axis of your scan in real-time – adding confidence to your procedures and cardiac imaging.



Auto B-line counter

Produces a B-line count from just a six-second ultrasound clip, simplifying dyspnea assessment.

iQ³



Enhanced comfort and efficiency.

A small, light probe with optimized ergonomics designed to revolutionize your scanning experience.

This innovative device is designed to reduce the physical strain on healthcare professionals and also ensures effortless maneuverability, allowing for more precise and comfortable scans.

Through customizable control buttons, you can tailor the functionality, ensuring intuitive operation and a sterile environment suited to every individual.

The user-friendly controls allow for seamless navigation, enabling quick scans and interpretations, thereby saving critical time during diagnoses.

Built to last your toughest shifts.

From immediate start-up to the longest scan time among rechargeable handheld devices, Butterfly iQ3 is the top device to keep you scanning all shift long.

Extended scan times¹ enable thorough examinations without interruptions, while shorter charge times help ensure that the device is ready for use, enhancing productivity and enabling seamless patient experiences.



Faster charging. Longer scan time.

Reliable magnetic charger.
Rapid charging in under 2 hours.
Up to 2-hour scan-time.

World-class durability.

Tested to withstand a 4-foot drop.²

Water and dust resistant.³

Replaceable stomp- and compression-tested cable.

1. Among rechargeable handheld devices.

2. Tested to MIL-STD-810G.

3. IP67 up to the line on the back of the probe.



iQ³

The new age of diagnostics.

Advance patient assessment with cutting-edge technology.

During your most challenging cases or moments when you need assistance, Butterfly iQ3's breaking-edge technology can aid you in your scan.



Butterfly handheld probes.



iQ+ Vet™



iQ3™

Frequency	1–10 MHz
Butterfly ultrasound chip	Second generation
Data transfer rate	4.8Gb/s
Probe dimensions	Area: 967 mm ² Length: 39.3 mm Width: 24.6 mm
Probe body	163 x 56 x 35 mm
Weight distribution	Distribution not ergonomic (309 g)
Buttons	1 button, not configurable
Charging	Wireless 5-hour charging
Standard warranty	1 year

Frequency	1–12 MHz
Butterfly ultrasound chip	Next generation
Data transfer rate	9.6Gb/s
Probe dimensions	Area: 808 mm ² Length: 35.3 mm Width: 22.9 mm
Probe body	152 x 52 x 37 mm
Weight distribution	Ergonomically distributed. (300g)
Buttons	3 buttons; configurable
Charging	Magnetic 2-hour contact charging
Standard warranty	3 years



Welcome to the future—where clarity transforms care, one diagnosis at a time.

17+ clinical presets

Abdomen Small Animal
Abdomen Large Animal
Bladder
Cardiac Small Animal
Cardiac Large Animal
Lung Small Animal
Lung Small Animal (B-Line)
Lung Large Animal
MSK Equine General
MSK Equine Shallow
MSK Equine Shifted Plane
Musculoskeletal
Nerve
Ophthalmic
Small Organ
Vascular

AI and advanced imaging tools

Auto B-line Counter
Biplane Imaging™
Needle Viz™
Manual Volume Calculations
Midline
Labeling Protocols




Imaging modes

B-Mode
Tissue harmonic imaging
M-Mode
Biplane Imaging™
Color Doppler Imaging (CDI)
Power Doppler
Power Doppler Imaging (PDI)
Pulsed Wave Doppler Imaging (PWD)

Education

Educational Services and Training
On-Demand Education Videos



 (866) 455-3050
 hello@nuonimaging.ca
 nuonimaging.ca



vet.butterflynetwork.com

For trained animal health professionals only. iQ3 Vet is a software experience customized for animal use only and is intended to be used in animal health care settings. Read the User Manual for warnings, precautions and/or contraindications.

All comparative claims are made relative to second generation iQ+ Vet product.

980-25132-00 Rev A